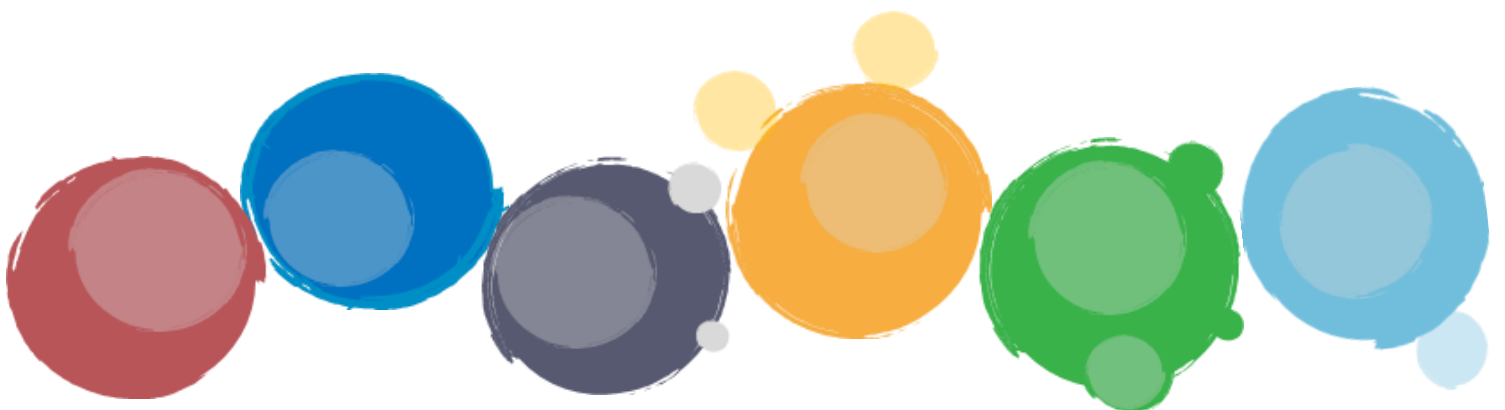




S | E | N | D | I | A | S | S  
H E R T F O R D S H I R E

# Advocacy



# Advocacy Definitions

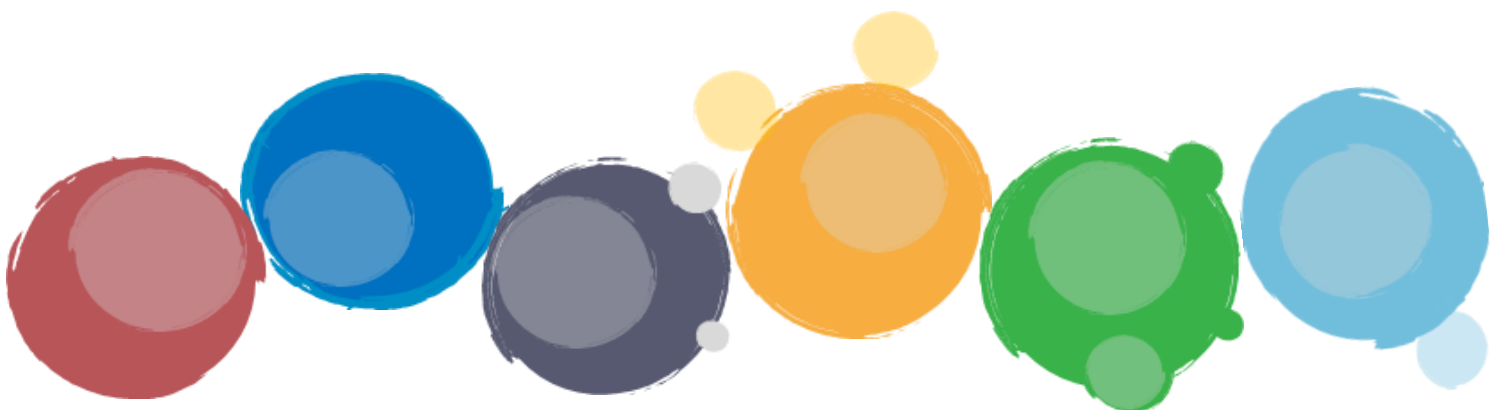
---

***The Council for Disabled Children use this definition of Advocacy:***

Advocacy means getting support from another person to help you express your views and wishes and help you understand and exercise your rights. SENDIASS do not fulfil the role of statutory advocates nor do they provide legal advocacy as provided by a lawyer.

You can find out more information at:

**[www.mind.org.uk/information-support/guides-to-support-and-services/advocacy/what-is-advocacy/?o=10149#.XRXYtuQ1u70](http://www.mind.org.uk/information-support/guides-to-support-and-services/advocacy/what-is-advocacy/?o=10149#.XRXYtuQ1u70)**



# How an Advocate can support you

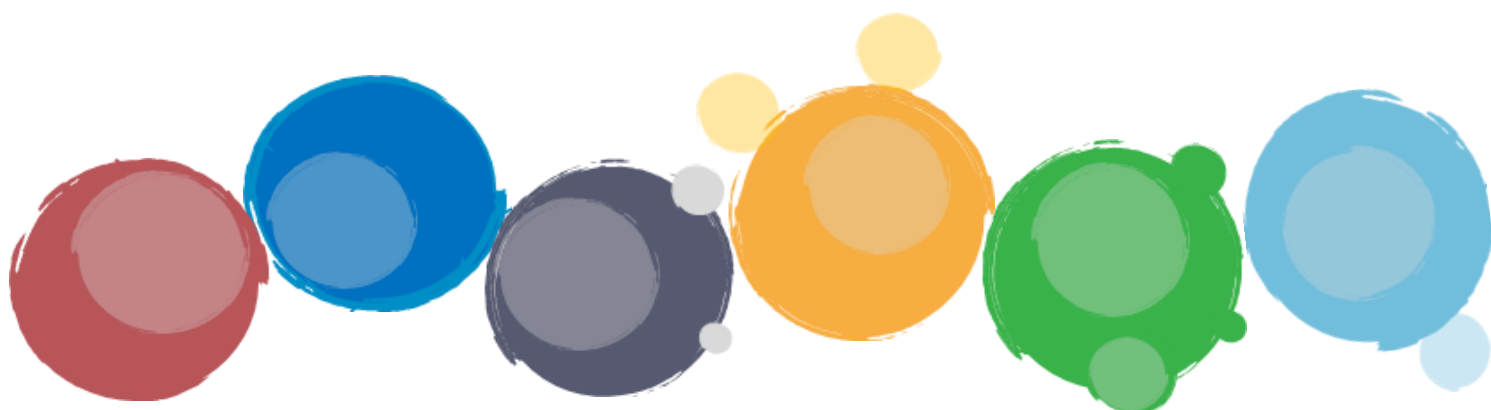
---

## **An Advocate can:**

- listen to your views and concerns
- help you explore your options and rights (without pressuring you)
- provide information to help you and make informed decisions
- help you contact relevant people, or contact them on your behalf
- accompany you and support you in meetings or appointments.

## **An Advocate will not:**

- give you their personal opinion
- solve problems and make decisions for you
- make judgements about you



# How can SENDIASS support me?

---

## **We can:**

- listen to your views and concerns
- work with you to explore your options
- help you prepare for meetings
- support you to find the confidence to express your views
- can support you with the Education, Health and Care (EHC) assessment and planning process
- help with forms, letters and reports
- work in partnership with schools and the local authority to develop positive relationships
- provide information on local policy and practice, personalisation, Personal Budgets, the law on SEN and disability, health and social care
- support on exclusions
- support in resolving disagreements, including mediation and tribunals
- signpost to local or national sources of advice, information and support and the local offer
- provide links to local parent support groups and forums
- provide training on the law relating to SEN and disability

You can contact us on: **01992 555847** or email us at **[sendiass@hertfordshire.gov.uk](mailto:sendiass@hertfordshire.gov.uk)**

